

# AGRICULTURE

## FORM THREE

### APRIL HOLIDAY ASSIGNMENT – 2024

Answer all questions in the assignment book

1. State one function of each of the following parts in chicken digestion (3mks)
  - a) Crop
  - b) Proventriculus
  - c) Gizzard
2. a) Name the digestive juice secreted in the stomach of a ruminant (1mk)  
b) Name two digestive enzymes secreted by pancreas (2mks)
3. Name the mineral whose deficiency symptom is Grass tetany in livestock. (1mk)
4. State two functions of carbohydrates in animal's body (2mks)
5. State why it is important for a farmer to inject piglets with Iron after birth? (1mk)
6. Give four reasons of feeding livestock with a balanced diet (4mks)
7. Mention the nutrient whose deficiency results to the following disorder (2mks)
  - a. Pica -
  - b. Parakeratosis -
8. .What does the term 'epistasis' mean in livestock improvement? (1mk)
9. Using the Pearson square method, compute a 300kg ration with 24% DCP from wheat containing 14% DCP and cotton seed cake containing 64% DCP (show your working) (3mks)
10. List three harmful effects of tsetse flies on livestock (1.5mks)
11. What is upgrading as used in livestock production? (1mk)
12. Define the terms bullock (1mk)
13. State the gestation period of the following farm animals (3mks)
  - a) sow
  - b) Rabbits
  - c) Cow
14. State three methods used in selection of livestock (1.5mks)

15. Give three signs of heat observed on female rabbit (3mks)

16. State two advantages of natural mating (1mk)

17. State three disadvantages of natural methods of mating in cattle breeding (3mks)

18. Describe four factors to consider when selecting a breeding stock. (4mks)

19. Name the type of breeding system represented below (1mk)

o Ayrshire sire x Boran Dam → F1 heifer x Hereford

20. State two reasons for breeding livestock. (2mks)

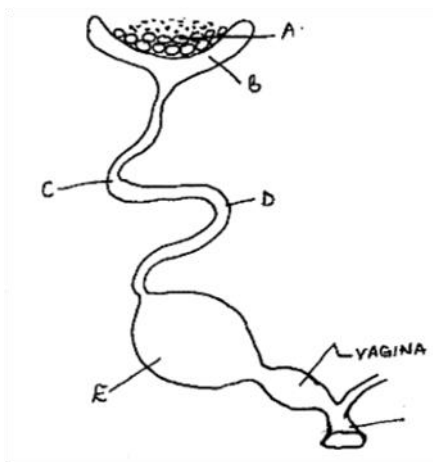
21. State two signs of farrowing in pigs. (2mks)

22. Give the breeding system involved in each of the following cases (2mks)

(a) Friesian sire mated with Ayrshire dam.

(b) Friesian sire (father) mated with Friesian dam (daughter)

16. Study the diagram of an oviduct of a hen and answer questions that follow:



Name the parts marked A, B, C, and E. (4mks)

17. Why should legume seeds be inoculated before planting (1mk)

18. State two benefits a farmer would get by having the correct plant population in the production of annual crops. (2mks)

19. State four factors that influence spacing when planting pure stand maize. (2mk)

20. Give two factors that would influence the time of planting beans (1mk)

21. Give four reasons for seed selection in crop production. (2mks)

22. State six factors that influence the spacing of an annual crop. (2mks)